



# AQUASHIELD® Rain Sealing System

## Product Specifications



### DESIGN HIGHLIGHTS

- Protects dock from moisture infiltration, keeping products safe from costly water damage
- Automatic position, no manual activation necessary
- Heavy-duty galvanized steel channel head frame
- Translucent fiberglass raked head frame for fast water drainage
- High-resilient foam core protected by three layers of durable coated fabric
- Seal is easily replaceable, reducing down time and maintenance costs
- Rugged support brackets for mounting over existing equipment
- Weighted side covers provide extra protection for the dock area (not shown)
- Covers trucks 12'-9" to 13'-6" high

### APPLICATION DATA

Door width: \_\_\_\_\_ ft. \_\_\_\_\_ in.

Door height: \_\_\_\_\_ ft. \_\_\_\_\_ in.

Dock height: \_\_\_\_\_ ft. \_\_\_\_\_ in.

Bumper protection\*: \_\_\_\_\_ in.

(\*Includes bumper projection and any building wall/foundation offset or cantilever)

### TRUCKS AND TRAILERS SERVICED

Width: \_\_\_\_\_ Max. \_\_\_\_\_ Min.

Height: \_\_\_\_\_ Max. \_\_\_\_\_ Min.

Length: \_\_\_\_\_ Max. \_\_\_\_\_ Min.

Hydraulic tailgate: ☐ Yes ☐ No

Rear step section: ☐ Yes ☐ No

Tailgate/step section size: \_\_\_\_\_ in

Yard jockeys: ☐ Yes ☐ No

### PROJECT INFORMATION

JOB NAME \_\_\_\_\_

ADDRESS \_\_\_\_\_

GENERAL CONTRACTOR \_\_\_\_\_

DISTRIBUTOR \_\_\_\_\_

QUANTITY \_\_\_\_\_

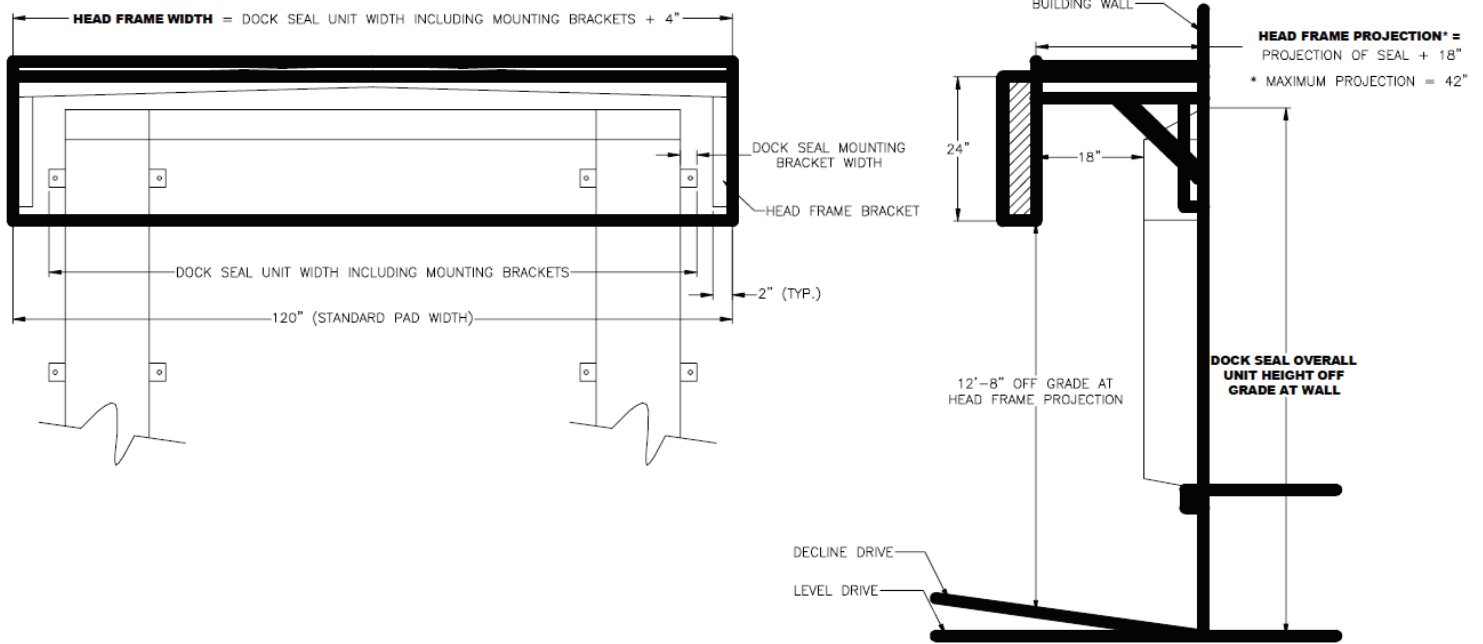
### CERTIFIED FOR CONSTRUCTION

BY \_\_\_\_\_

COMPANY \_\_\_\_\_

ADDRESS \_\_\_\_\_

DATE \_\_\_\_\_



**Drive/Approach:** ☐ Level ☐ Incline ☐ Decline

**Weighted Side Covers:** 22 oz. vinyl

**Color:** ☐ Black ☐ Tan ☐ Brown ☐ Blue ☐ Green

**Removable Cover Material:** TS-55®

**Color:** ☐ Black ☐ Tan ☐ Brown ☐ Blue ☐ Green

☐ Flame retardant fabric & foam ☐ Flame retardant fabric only

**Wear Pleat Material:** TS-55®

**Color:** ☐ Black ☐ Tan ☐ Brown ☐ Blue ☐ Green

**Head Frame Material:** Galvanized steel

**Top Projection of Dock Seal:** \_\_\_\_\_ **Bottom Projection of Dock Seal:** \_\_\_\_\_

**Aquashield Head Frame Projection:** \_\_\_\_\_ (18" greater than dock seal top projection)

**Dock Seal Overall Unit Height off Grade at Wall:** \_\_\_\_\_

**Dock Seal Unit Width:** \_\_\_\_\_ (Total inches)

**Dock Seal Unit Width Including Mounting Brackets:** \_\_\_\_\_

**Aquashield Head Frame Width:** \_\_\_\_\_ (Total inches)

**Building Wall Construction:** ☐ Metal ☐ Other

\*Conversions: To convert measurements to metric, see formulas below:

Inches x 25.4 = millimeters (Example: 4" x 25.4 = 101.6 mm)

Feet x .3048 = meters (Example: 12' x .3048 = 3.66 m)



**Kelley**  
1612 Hutton Drive, Suite 140  
Carrollton, TX 75006  
800.558.6960  
www.kelleydocksolutions.com

4Front Engineered Solutions reserves the right to change specifications and designs without notice and without incurring obligations. 4Front Engineered Solutions products may be the subject of one or more U.S. and/or foreign, issued and/or pending, design and/or utility patents. Kelley as word and logo are registered trademarks belonging to ASSA ABLOY Entrance Systems AB or other companies controlled by the same organization. All rights reserved.

©ASSA ABLOY. All rights reserved. Part of ASSA ABLOY. Printed in USA. KPS-SARS-1220