



Rigid Frame KI-450 Inflatable Shelter

Product Specifications



DESIGN HIGHLIGHTS

- Provides full height and width access to interior of trailer
- Inflated by a high volume, low pressure 1/2 HP, 115V blower motor system after the trailer is positioned at the loading dock
- Side and head air chambers constructed from durable 10 oz/sq. yd. vinyl coated fabric
- Roll-formed galvanized steel channel frame
- Before the trailer departs, air chambers retract from contact with the trailer and store behind side and head curtains
- Can be interlocked with other dock equipment for improved performance and efficiency

APPLICATION DATA

Door width: _____ ft. _____ in.

Door height: _____ ft. _____ in.

Dock height: _____ ft. _____ in.

Bumper protection*: _____ in.

(*Includes bumper projection and any building wall/foundation offset or cantilever)

TRUCKS AND TRAILERS SERVICED

Width: _____ Max. _____ Min.

Height: _____ Max. _____ Min.

Length: _____ Max. _____ Min.

Hydraulic tailgate: ☐ Yes ☐ No

Tailgate/step section size: _____ in

Rear step section: ☐ Yes ☐ No

Yard jockeys: ☐ Yes ☐ No

PROJECT INFORMATION

JOB NAME _____

ADDRESS _____

GENERAL CONTRACTOR _____

DISTRIBUTOR _____

QUANTITY _____

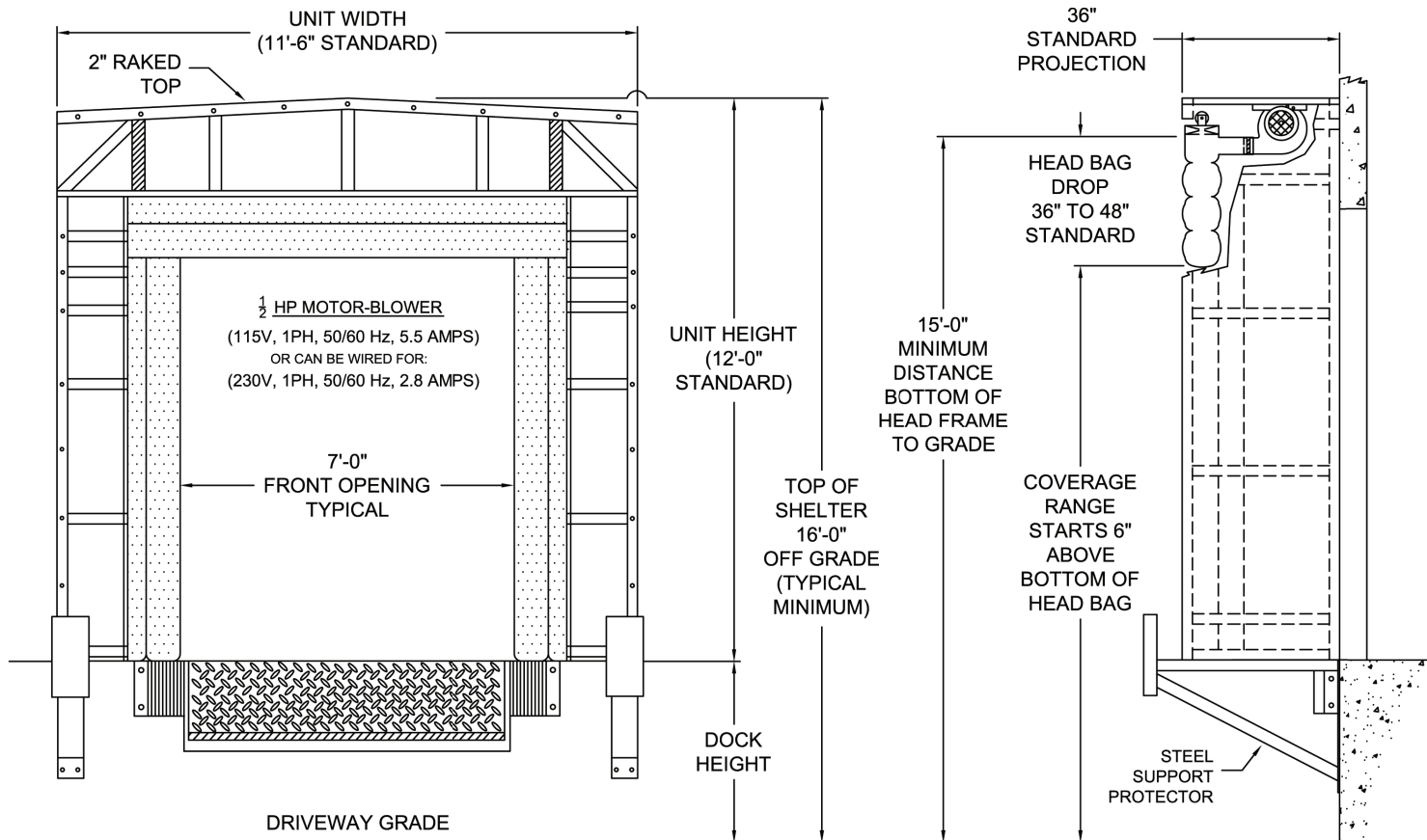
CERTIFIED FOR CONSTRUCTION

BY _____

COMPANY _____

ADDRESS _____

DATE _____



Quantity _____ ☐ Complete unit ☐ Parts only
(Indicate if parts are for existing steel or wood frame and the parts required including lefts and rights)

Galvanized Steel Channel Frame (Standard)

Motor/blower: ☐ Std. 1/2 HP, 115V, 50/60 Hz, 5.5 Amps (Switch with pilot light included) ☐ None
(Motor can be wired for 220V, 1Ph, 50/60 Hz, 2.8 Amps)

Unit Width: ☐ 11'-6" ☐ 12'-0" ☐ 12'-7" ☐ 13'-0"

Unit Height: ☐ 12'-0" ☐ 12'-6" ☐ 13'-0" ☐ 13'-6" ☐ 14'-0" ☐ _____"

(Note: Taller sizes are typically used for grade level applications)

Head Frame Style: Raked

Air Bag Color: Black

Air Bag Fabric: ☐ 10 oz. vinyl ☐ 16 oz CSM

Storage Curtain Fabric: ☐ 22 oz. vinyl ☐ 40 oz. vinyl ☐ 40 oz. CSM

Curtain Colors: ☐ Black ☐ Tan ☐ Brown ☐ Blue ☐ Green

(Note: Colors only available with 22 oz. vinyl)

Head Bag Drop: ☐ 36" ☐ 42" ☐ 48" ☐ 54" ☐ 60"

Head Frame/Side Frame Projection: ☐ 36" ☐ 42" ☐ 48" ☐ 54" ☐ 60"

Steel Supports: ☐ None ☐ 42" ☐ 48" ☐ 54" ☐ 60" ☐ 66"

Options: ☐ Door numbers (Specify) ☐ Electrical interconnect (Consult factory)

NOTE: Not all options are available with all models.

*Conversions: To convert measurements to metric, see formulas below:

Inches x 25.4 = millimeters (Example: 4" x 25.4 = 101.6 mm)

Feet x .3048 = meters (Example: 12' x .3048 = 3.66 m)



Kelley
1612 Hutton Drive, Suite 140
Carrollton, TX 75006
800.558.6960
www.kelleydocksolutions.com

4Front Engineered Solutions reserves the right to change specifications and designs without notice and without incurring obligations. 4Front Engineered Solutions products may be the subject of one or more U.S. and/or foreign, issued and/or pending, design and/or utility patents. Kelley as word and logo are registered trademarks belonging to ASSA ABLÖY Entrance Systems AB or other companies controlled by the same organization. All rights reserved.

©ASSA ABLÖY. All rights reserved. Part of ASSA ABLÖY. Printed in USA. KPS-SI45-1220