



# DSSL L-PAD Standard Dock Seal

## Product Specifications



### DESIGN HIGHLIGHTS

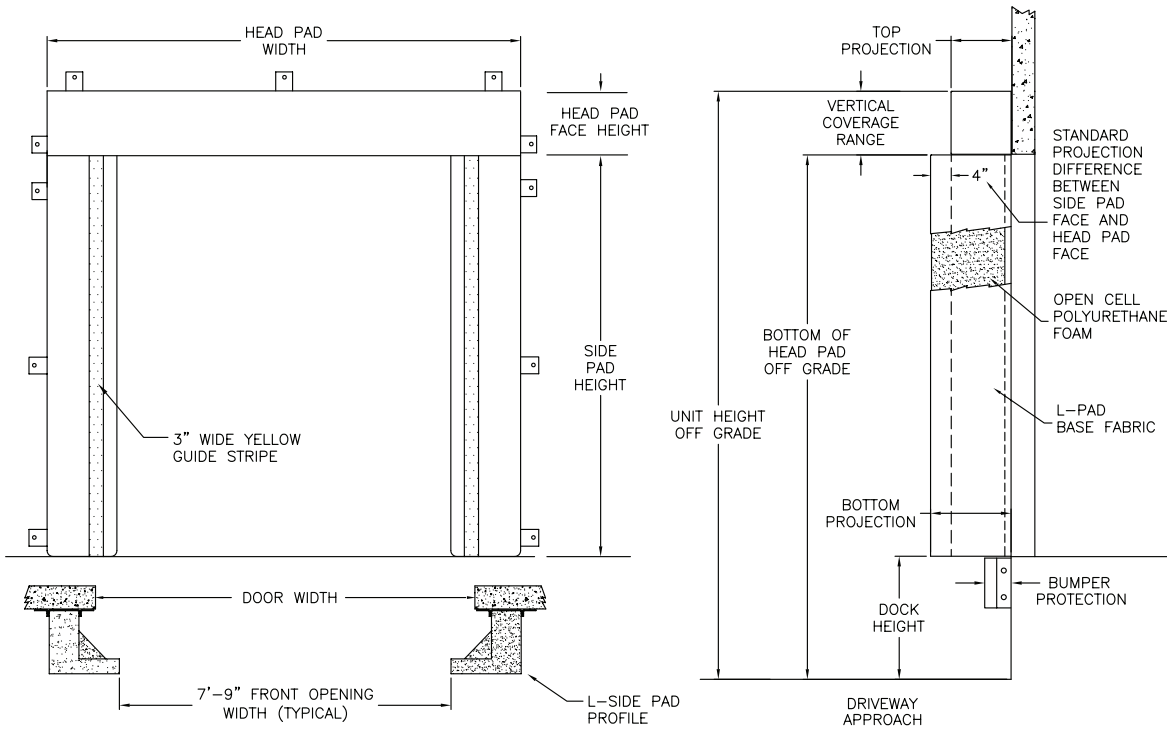
- L-shaped sides compress around side of trailer to create a seal providing full width trailer access
- Provides positive seal between internal and external environments
- Endurance-tested foam core is continuously bonded to frame surface with flexible, non-flammable adhesive
- Wide selection of coated fabrics provide maximum durability
- Highly resilient, open-celled polyurethane foam compresses easily to extend seal life
- Roll-formed galvanized steel framing reduces pressure on building wall
- All pads are vented for air and moisture release
- Full length yellow stripes guide
- Heavy-duty, galvanized steel mounting brackets included

### PROJECT INFORMATION

JOB NAME \_\_\_\_\_  
ADDRESS \_\_\_\_\_  
GENERAL CONTRACTOR \_\_\_\_\_  
DISTRIBUTOR \_\_\_\_\_  
QUANTITY \_\_\_\_\_

### CERTIFIED FOR CONSTRUCTION

BY \_\_\_\_\_  
COMPANY \_\_\_\_\_  
ADDRESS \_\_\_\_\_  
DATE \_\_\_\_\_



Quantity \_\_\_\_\_

**Framing:** Roll-formed galvanized steel

**Head Pad Width:**  129" for 9'3" door widths or smaller  135" for 9'4" to 10'0" door widths

**Head Pad Bevel:**  12/12  18/18  24/24  12/15  12/18  Wearmaster head pad

**Drop Curtain:**  None  12"  Hook-Loop

**Side Pad Height:** \_\_\_\_\_ (Total unit height)

**Side Pad Face**  18" for 9'3" door widths or smaller  21" for 9'4" to 10'0" door widths

**Base Material**  22 oz. vinyl  40 oz. vinyl  16 oz. CSM  40 oz. CSM  TS-55®

**Color:**  Black  Tan  Brown  Blue  Green

**Taper:**  Tapered  Non-Tapered

**Top Projection:**  16"  18"  20"  22"  24"  \_\_\_\_\_"

**Bottom Projection:**  16"  18"  20"  22"  24"  \_\_\_\_\_"

**Blockout:**  None  Top projection \_\_\_\_\_"  Bottom projection \_\_\_\_\_"

**Wear Surface:**  None  Wear face  Side pad  Head pad

**Material:**  22 oz. vinyl  40 oz. vinyl  40 oz. CSM  TS-55®

**Color:**  Black  Tan  Brown  Blue  Green

**Wear Pleats:**  None  WP4  WP8  WP16  Side pads  Head pad corners

**Material:**  22 oz. vinyl  40 oz. vinyl  40 oz. CSM  TS-55®

**Color:**  Black  Tan  Brown  Blue  Green

**Options:**  Door numbers  Flame retardant fabric & foam  Flame retardant fabric only

**Side Pad Mounting Brackets:**  None  Flats & angles  Angles  1 1/2 Offsets & angles

\*Conversions: To convert measurements to metric, see formulas below:

Inches x 25.4 = millimeters (Example: 4" x 25.4 = 101.6 mm)

Feet x .3048 = meters (Example: 12' x .3048 = 3.66 m)



**Kelley**

1612 Hutton Drive, Suite 140

Carrollton, TX 75006

800.558.6960

www.kelleydockssolutions.com

4Front Engineered Solutions reserves the right to change specifications and designs without notice and without incurring obligations. 4Front Engineered Solutions products may be the subject of one or more U.S. and/or foreign, issued and/or pending, design and/or utility patents. Kelley as word and logo are registered trademarks belonging to ASSA ABLÖY Entrance Systems AB or other companies controlled by the same organization. All rights reserved.

©ASSA ABLÖY. All rights reserved. Part of ASSA ABLÖY. Form # KPS-SEDSL-0725