



DSSL L-PAD Standard Dock Seal

Product Specifications



DESIGN HIGHLIGHTS

- L-shaped sides compress around side of trailer to create a seal providing full width trailer access
- Provides positive seal between internal and external environments
- Endurance-tested foam core is continuously bonded to frame surface with flexible, non-flammable adhesive
- Wide selection of coated fabrics provide maximum durability
- Highly resilient, open-celled polyurethane foam compresses easily to extend seal life
- Roll-formed galvanized steel framing reduces pressure on building wall
- All pads are vented for air and moisture release
- Full length yellow stripes guide
- Heavy-duty, galvanized steel mounting brackets included

PROJECT INFORMATION

JOB NAME _____

ADDRESS _____

GENERAL CONTRACTOR _____

DISTRIBUTOR _____

QUANTITY _____

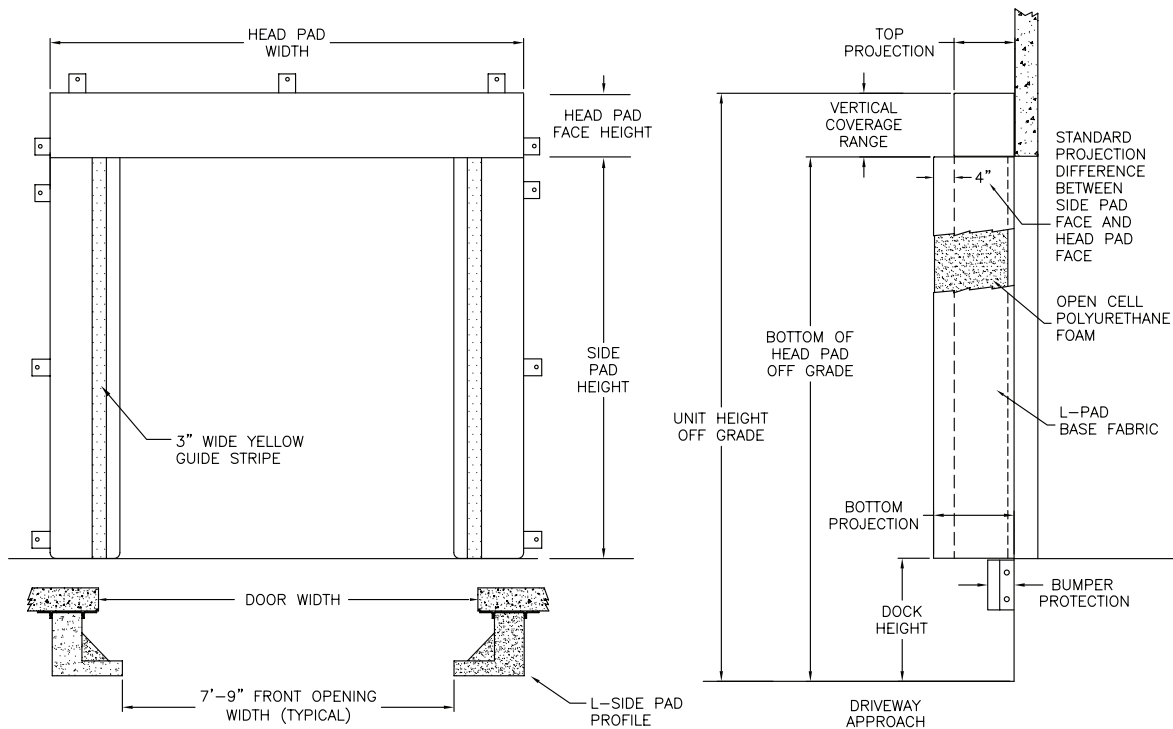
CERTIFIED FOR CONSTRUCTION

BY _____

COMPANY _____

ADDRESS _____

DATE _____



Quantity _____

Framing: Roll-formed galvanized steel

Head Pad Width: ☐ 129" for 9'3" door widths or smaller ☐ 135" for 9'4" to 10'0" door widths

Head Pad Bevel: ☐ 12/12 ☐ 18/18 ☐ 24/24 ☐ 12/15 ☐ 12/18 ☐ Wearmaster head pad

Drop Curtain: ☐ None ☐ 12" ☐ Hook-Loop

Side Pad Height: _____ (Total unit height)

Side Pad Face ☐ 18" for 9'3" door widths or smaller ☐ 21" for 9'4" to 10'0" door widths

Base Material ☐ 22 oz. vinyl ☐ 40 oz. vinyl ☐ 16 oz. CSM ☐ 40 oz. CSM ☐ TS-55®

Color: ☐ Black ☐ Tan ☐ Brown ☐ Blue ☐ Green

Taper: ☐ Tapered ☐ Non-Tapered

Top Projection: ☐ 16" ☐ 18" ☐ 20" ☐ 22" ☐ 24" ☐ _____"

Bottom Projection: ☐ 16" ☐ 18" ☐ 20" ☐ 22" ☐ 24" ☐ _____"

Blockout: ☐ None ☐ Top projection _____" ☐ Bottom projection _____"

Wear Surface: ☐ None ☐ Wear face ☐ Side pad ☐ Head pad

Material: ☐ 22 oz. vinyl ☐ 40 oz. vinyl ☐ 40 oz. CSM ☐ TS-55®

Color: ☐ Black ☐ Tan ☐ Brown ☐ Blue ☐ Green

Wear Pleats: ☐ None ☐ WP4 ☐ WP8 ☐ WP16 ☐ Side pads ☐ Head pad corners

Material: ☐ 22 oz. vinyl ☐ 40 oz. vinyl ☐ 40 oz. CSM ☐ TS-55®

Color: ☐ Black ☐ Tan ☐ Brown ☐ Blue ☐ Green

Options: ☐ Door numbers ☐ Flame retardant fabric & foam ☐ Flame retardant fabric only

Side Pad Mounting Brackets: ☐ None ☐ Flats & angles ☐ Angles ☐ 1 1/2" Offsets & angles

*Conversions: To convert measurements to metric, see formulas below:

Inches x 25.4 = millimeters (Example: 4" x 25.4 = 101.6 mm)

Feet x .3048 = meters (Example: 12' x .3048 = 3.66 m)



Kelley

1612 Hutton Drive, Suite 140

Carrollton, TX 75006

800.558.6960

www.kelleydocksolutions.com

4Front Engineered Solutions reserves the right to change specifications and designs without notice and without incurring obligations. 4Front Engineered Solutions products may be the subject of one or more U.S. and/or foreign, issued and/or pending, design and/or utility patents. Kelley as word and logo are registered trademarks belonging to ASSA ABLÖY Entrance Systems AB or other companies controlled by the same organization. All rights reserved.

©ASSA ABLÖY. All rights reserved. Part of ASSA ABLÖY. Printed in USA. KPS-SEDSL-1220