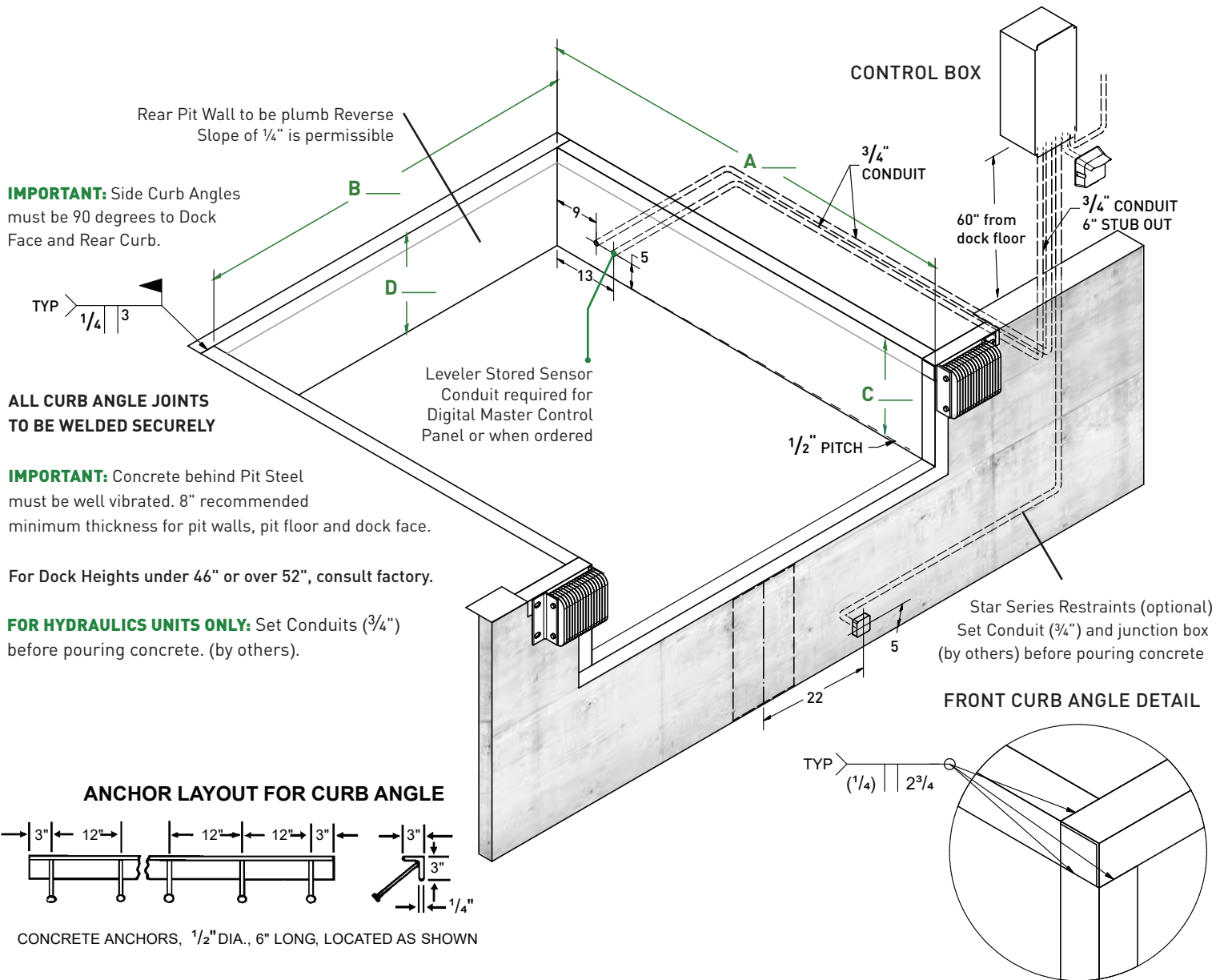




HHC Dock Levelers Straight Pit Details



PROJECT INFORMATION

JOB NAME _____

ADDRESS _____

GENERAL CONTRACTOR _____

DISTRIBUTOR _____

MODEL _____ VOLTAGE _____ QUANTITY _____

CERTIFIED FOR CONSTRUCTION

BY _____

DATE _____

COMPANY _____

ADDRESS _____

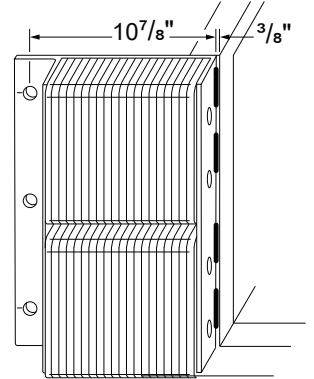
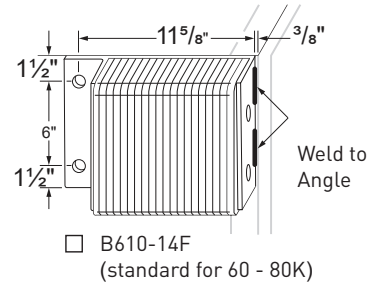
WARNING: Death or serious injury could result from failure to follow Kelley specifications for pit dimensions and/or configurations, or conduit location; improper installation of dock leveler, anchoring devices or optional/accessory equipment; installation into improperly formulated, prepared or placed concrete or concrete which is otherwise inadequate or unsound.

Pit Dimensional Tolerances are +/- 1/8" on squareness, Depth, Width and Length.
KELLEY Assumes No Liability for Deviations beyond this Tolerance.

DIMENSIONS BELOW ARE FOR HHC Leveler Series									
MODEL	PIT DIMENSIONS				*CURB ANGLE LENGTHS (Qty.)				
	DIM "A"	DIM "B"	DIM "C"	DIM "D"	REAR (1)	FRONT (1)	SIDE (2)	FACE (2)	BUMPER (2)
5' x 6' †	51"	73"	24"	23 1/2"	79"	79"	48"	21"	Varies with application
6' x 6'	63"	73"	24"	23 1/2"	79"	79"	60"	21"	
8' x 6'	87"	73"	24"	23 1/2"	79"	79"	84"	21"	
10' x 6'	111"	73"	24"	23 1/2"	79"	79"	108"	21"	
12' x 6' †	135"	73"	24"	23 1/2"	79"	79"	132"	21"	
6' x 6'6"	63"	79"	24"	23 1/2"	85"	85"	60"	21"	
8' x 6'6"	87"	79"	24"	23 1/2"	85"	85"	84"	21"	
10' x 6'6"	111"	79"	24"	23 1/2"	85"	85"	108"	21"	
12' x 6'6" †	135"	79"	24"	23 1/2"	85"	85"	132"	21"	
6' x 7'	63"	85"	24"	23 1/2"	91"	91"	60"	21"	
8' x 7'	87"	85"	24"	23 1/2"	91"	91"	84"	21"	
10' x 7'	111"	85"	24"	23 1/2"	91"	91"	108"	21"	
12' x 7' †	135"	85"	24"	23 1/2"	91"	91"	132"	21"	

* NOTE - CURB ANGLES SUPPLIED BY OTHERS. † N/A ON MECHANICAL LEVELERS

LAMINATED BUMPERS

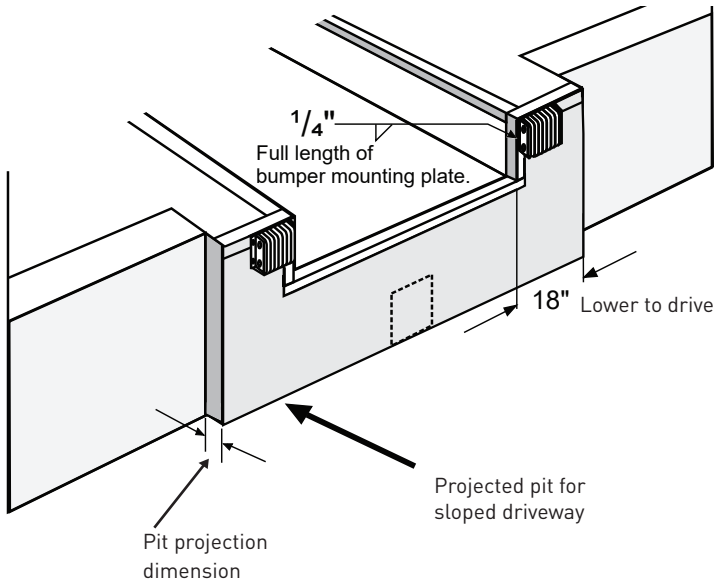


PIT PROJECTION GUIDE FOR DECLINE DRIVE CONDITIONS

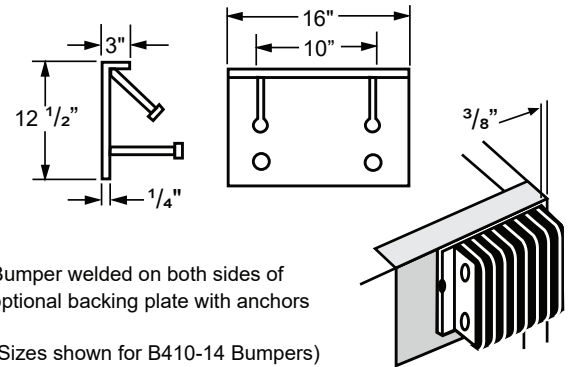
PERCENTAGE OF DRIVEWAY GRADE	0%	1%	2%	3%	4%	5%	6%	7%	8%	9%	10%
PIT PROJECTION	0"	2"	3"	4"	5"	6"	8"	9"	10"	11"	12"

NOTE: If metal or decorative facing is used, add an extra inch of pit protection for every inch of facing projection.

NOTE: If pit projects more than 4", concrete specifications should be reviewed with qualified structural engineer.



(OPTIONAL) BUMPER MOUNTING PLATE



LEVELER ELECTRICAL REQUIREMENTS

VOLTAGE	<input type="checkbox"/> 120	<input type="checkbox"/> 208	<input type="checkbox"/> 240
	<input type="checkbox"/> 480	<input type="checkbox"/> 575	
PHASE	<input type="checkbox"/> 1Ø	<input type="checkbox"/> 3Ø	
FREQUENCY	<input type="checkbox"/> 60 Hz	<input type="checkbox"/> 50 Hz	

HHC Leveler Series	Hydraulic Dockleveler Control	Voltage (V) and Phase (PH)	Quantity and Wire Gauge (GA)			Total Quantity of Wires
			12 GA	14 GA	18 GA	
HHC	Standard Control Box	115V / 1PH	3			3
		230V / 1PH		3		3
		190-575V / 3PH		4		4
HHC Option 1	Optional Control Box w/ARTD	115V / 1PH	3		2	5
		230V / 1PH		3	2	5
		190-575V / 3PH		4	2	6
HHC Option 2	Optional Control Box w/3BC	115V - 230V 1PH	3		3	6
		190-575V / 3PH		4	3	7
HHC Option 3	Optional Control Box w/ARTD & 3BC	190-575V / 3PH	3		5	8
		115V - 230V 1PH		4	5	9

ARTD = Auto Return to Dock

3BC = Three Button Control allows independent control of lip with E-stop



1612 Hutton Drive, Suite 140 Carrollton, TX 75006
800.558.6960 kelleydocksolutions.com

4Front Engineered Solutions reserves the right to change specifications and designs without notice and without incurring obligations. 4Front Engineered Solutions products may be the subject of one or more U.S. and/or foreign, issued and/or pending, design and/or utility patents. Kelley as word and logo are registered trademarks belonging to ASSA ABLOY Entrance Systems AB or other companies controlled by the same organization. All rights reserved.

©ASSA ABLOY. All rights reserved. Part of ASSA ABLOY. Printed in USA. Form #KPD-DHHC-0224