



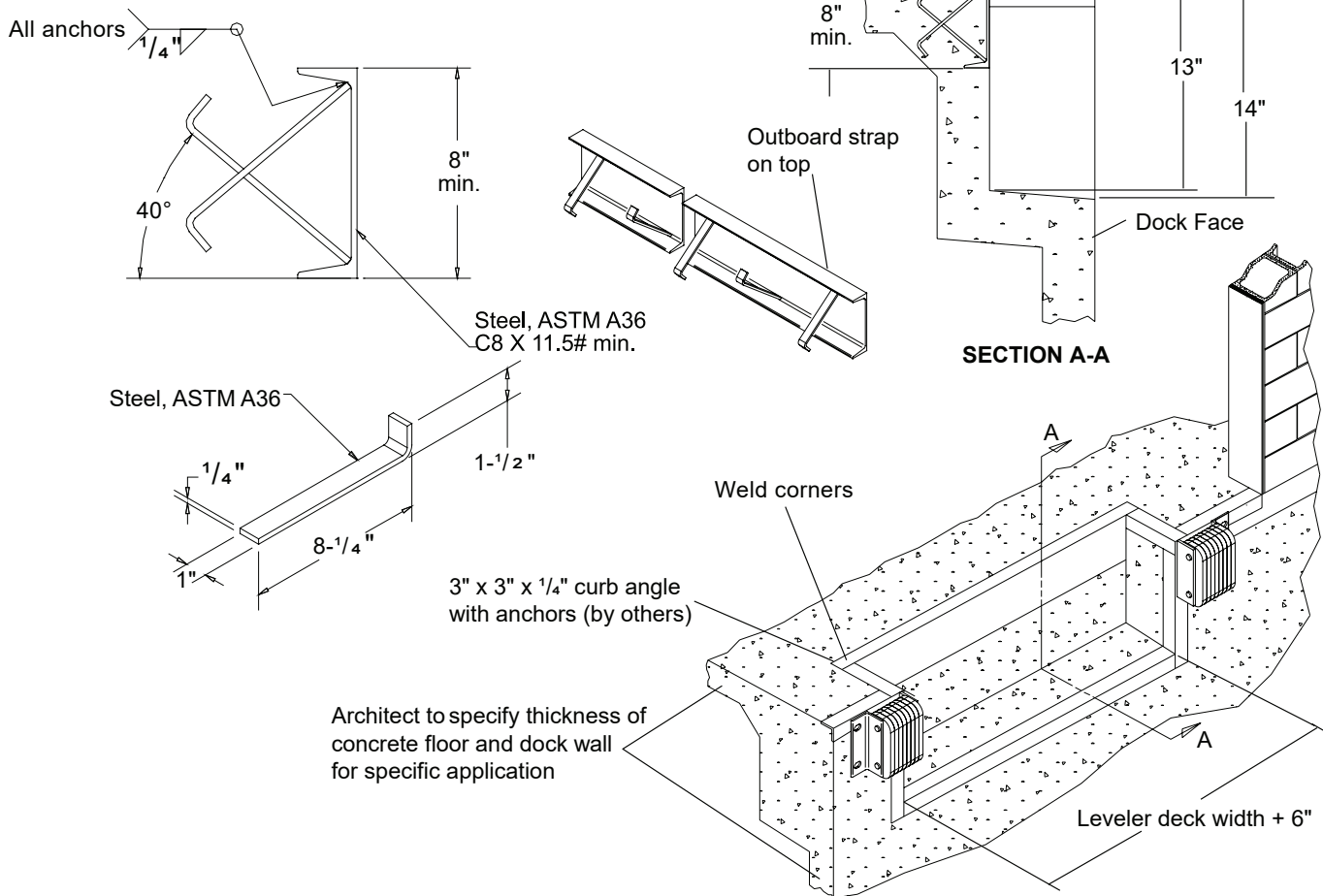
KELLEY

Edge-of-Dock Levelers Recessed Pit Details

Mechanical Edge-of-Dock Levelers

Applies to Edge-of-Dock levelers manufactured beginning March 2009 with the serial numbers 10263626 and higher.

1. Use a minimum 12" x 14" pit recess with an additional 3" of clearance per side of leveler. See Fig. 1.
2. Follow the section that addresses your installation and then continue to the GENERAL INSTALLATION section in the your User's Manual included with your leveler.



PROJECT INFORMATION

JOB NAME _____
 ADDRESS _____
 GENERAL CONTRACTOR _____
 DISTRIBUTOR _____
 MODEL _____ VOLTAGE _____ QUANTITY _____

CERTIFIED FOR CONSTRUCTION

BY _____
 DATE _____
 COMPANY _____
 ADDRESS _____

WARNING: Death or serious injury could result from failure to follow Kelley specifications for pit dimensions and/or configurations, or conduit location; improper installation of dock leveler, anchoring devices or optional/accessory equipment; installation into improperly formulated, prepared or placed concrete or concrete which is otherwise inadequate or unsound.

Powered Edge-of-Dock Levelers

1. Use a minimum 12" x 25" pit recess with an additional 3" of clearance per side of leveler. See Fig. 2.
2. Follow the section that addresses your installation and then continue to the GENERAL INSTALLATION section in the your User's Manual included with your leveler.

Fig. 2

