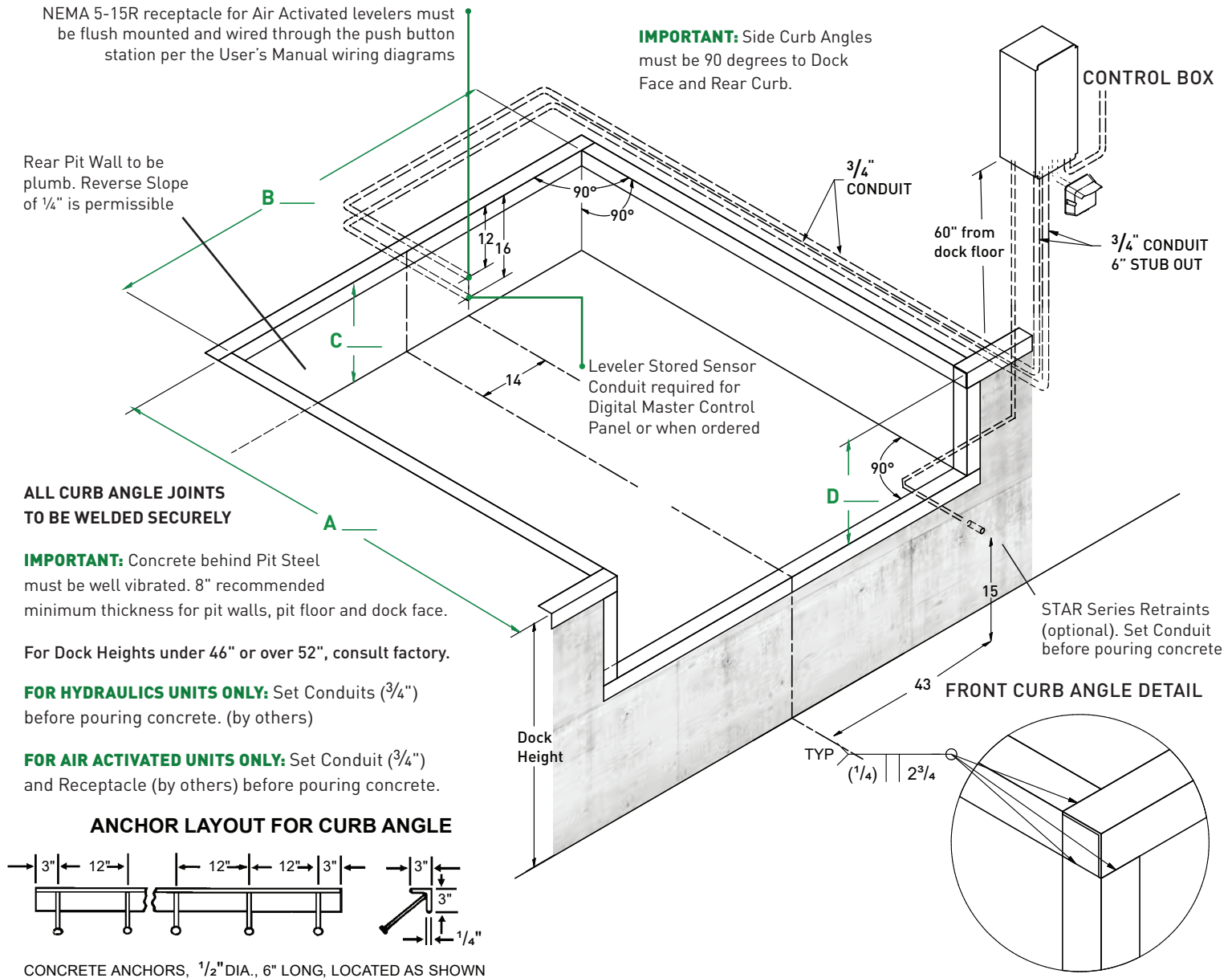




# HK, HP, aFX, aFX-S and aFX-C Dock Levelers

## Straight Pit Details



### PROJECT INFORMATION

JOB NAME \_\_\_\_\_

ADDRESS \_\_\_\_\_

GENERAL CONTRACTOR \_\_\_\_\_

DISTRIBUTOR \_\_\_\_\_

MODEL \_\_\_\_\_ VOLTAGE \_\_\_\_\_ QUANTITY \_\_\_\_\_

### CERTIFIED FOR CONSTRUCTION

BY \_\_\_\_\_

DATE \_\_\_\_\_

COMPANY \_\_\_\_\_

ADDRESS \_\_\_\_\_

**WARNING:** Death or serious injury could result from failure to follow Kelley specifications for pit dimensions and/or configurations, or conduit location; improper installation of dock leveler, anchoring devices or optional/accessory equipment; installation into improperly formulated, prepared or placed concrete or concrete which is otherwise inadequate or unsound.

Pit Dimensional Tolerances are  $\pm 1/8"$  on squareness, Depth, Width and Length.  
Kelley Assumes No Liability for Deviations beyond this Tolerance.

NOMINAL DOCK LEVELER SIZE		6' x 6'	6' x 8'	6' x 10'	6.5' x 6'	6.5' x 8'	6.5' x 10'	7' x 6'	7' x 8'	7' x 10'
PIT LENGTH	DIM. "A"	63"	87"	111"	63"	87"	111"	63"	87"	111"
PIT WIDTH	DIM. "B"	74"	74"	74"	80"	80"	80"	85"	85"	85"
PIT DEPTH Rear	DIM. "C"	19-1/2"	19-1/2"	23-1/2"	19-1/2"	19-1/2"	23-1/2"	19-1/2"	19-1/2"	23-1/2"
PIT DEPTH Front	DIM. "D"	20"	20"	24"	20"	20"	24"	20"	20"	24"
CURB ANGLES										
Front/Rear		80"	80"	80"	86"	86"	86"	91"	91"	91"
Side		60"	84"	108"	60"	84"	108"	60"	84"	108"
BUMPERS										
Vertical		17"	17"	21"	17"	17"	21"	17"	17"	21"
Horizontal		21"	21"	21"	21"	21"	21"	21"	21"	21"

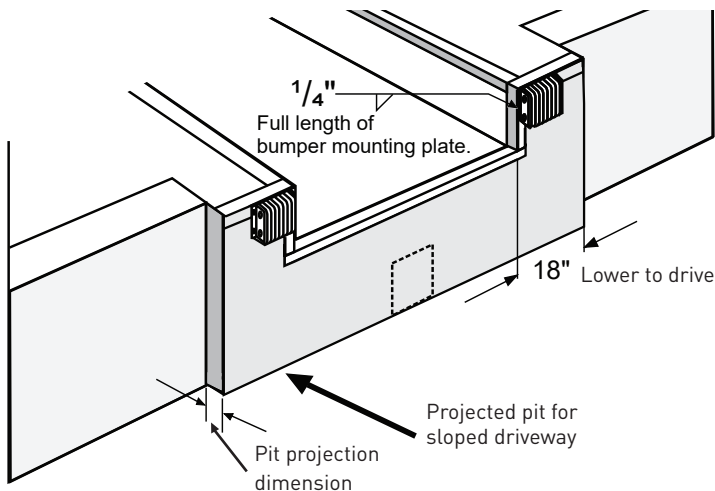
**NOTE:** See Kelley Drawing No. 10-740 for Cantilever Pit Details. See Kelley Product Manual for Wiring Diagrams.

**NOTE:** If metal or decorative facing is used, add an extra inch of pit protection for every inch of facing projection.

**NOTE:** If pit projects more than 4", concrete specifications should be reviewed with qualified structural engineer.

#### PIT PROJECTION GUIDE FOR DECLINE DRIVE CONDITIONS

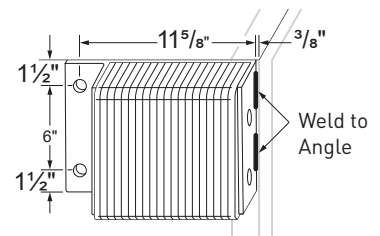
PERCENTAGE OF DRIVEWAY GRADE	0%	1%	2%	3%	4%	5%	6%	7%	8%	9%	10%
PIT PROJECTION	0"	2"	3"	4"	5"	6"	8"	9"	10"	11"	12"



#### LEVELER ELECTRICAL REQUIREMENTS

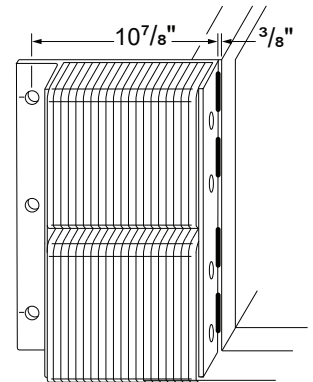
VOLTAGE	<input type="checkbox"/> 120	<input type="checkbox"/> 208	<input type="checkbox"/> 240
	<input type="checkbox"/> 480	<input type="checkbox"/> 575	
PHASE	<input type="checkbox"/> 1Ø	<input type="checkbox"/> 3Ø	
FREQUENCY	<input type="checkbox"/> 60 Hz	<input type="checkbox"/> 50 Hz	

#### LAMINATED BUMPERS



☐ B410-14F  
(standard for 30 - 50K)

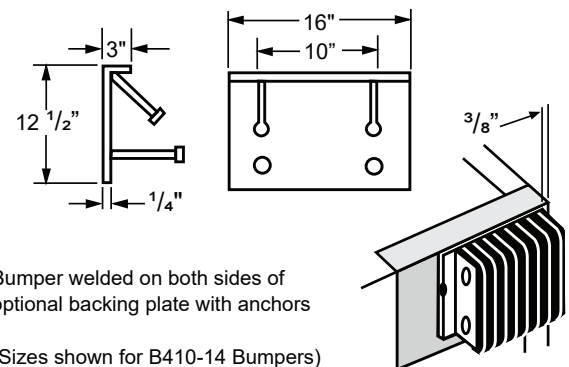
☐ B610-14F  
(standard for 60 - 80K)



☐ VB420-11F  
(optional for 30 - 50K)

☐ VB620-11F  
(optional for 60 - 80K)

#### (OPTIONAL) BUMPER MOUNTING PLATE



Bumper welded on both sides of optional backing plate with anchors

(Sizes shown for B410-14 Bumpers)

Hydraulic Leveler Series	Hydraulic Dockleveler Control	Voltage (V) and Phase (PH)	Quantity and Wire Gauge (GA)			Total Quantity of Wires
			12 GA	14 GA	18 GA	
HP, HK	Standard Control Box	115V / 1PH	3			3
		230V / 1PH		3		3
		190-575V / 3PH		4		4
	Optional Control Box w/ARTD	115V / 1PH	3		2	5
		230V / 1PH		3	2	5
		190-575V / 3PH		4	2	6
HK	Optional Control Box w/3BC	115V - 230V 1PH	3		3	6
		190-575V / 3PH		4	3	7
	Optional Control Box w/ARTD & 3BC	190-575V / 3PH	3		5	8
		115V - 230V 1PH		4	5	9

ARTD = Auto Return to Dock

3BC = Three Button Control allows independent control of lip with E-stop



1612 Hutton Drive, Suite 140 Carrollton, TX 75006  
800.558.6960 kelleydocksolutions.com

4Front Engineered Solutions reserves the right to change specifications and designs without notice and without incurring obligations. 4Front Engineered Solutions products may be the subject of one or more U.S. and/or foreign, issued and/or pending, design and/or utility patents. Kelley as word and logo are registered trademarks belonging to ASSA ABLÖY Entrance Systems AB or other companies controlled by the same organization. All rights reserved.

©ASSA ABLÖY. All rights reserved. Part of ASSA ABLÖY. Printed in USA. Form #KPA-D000-1220